

# RICOH

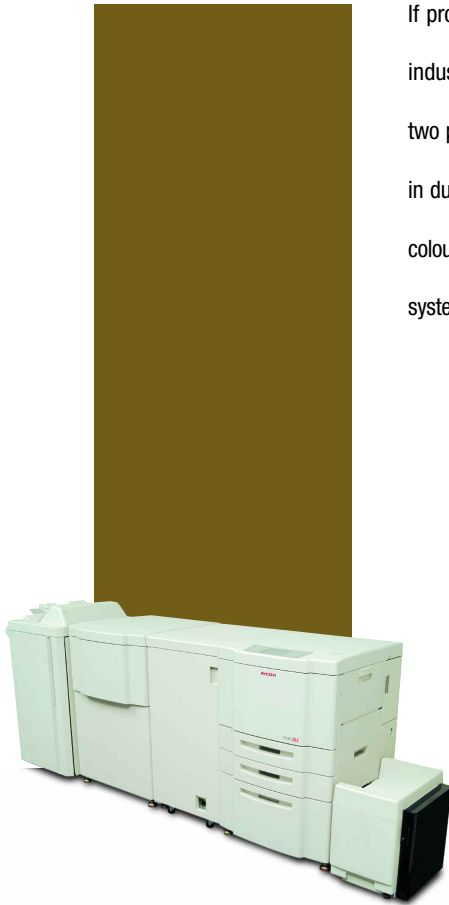
Input  
Throughput  
Output



**DDP 184**  
Digital Document Publisher

# High Speed Duplex Printing with Spot Colour for Production Intensive Environments

If production volume and fast throughput are your main requirements, then the DDP 184 with an industrial strength engine and high speed duplex printing is the best solution for you. Equipped with two production ready engines, the DDP 184 is capable of printing up to 184 images per minute (ipm) in duplex mode. The DDP 184 is spot colour capable and produces highlight colour documents when colour developer and toner are added. With a small physical footprint, a comprehensive network support system and robust printing engines, the DDP 184 is well suited for any high volume printing environment.



## High Duplex Productivity

The new DDP 184 from Ricoh combines two 92 page per minute (ppm) printer engines that print at a blazing 184 images per minute (ipm) in duplex mode. You can replace one black toner with a spot colour toner for two-colour applications. The DDP 184 improves upon a two-printer cluster from the functional point of view. It has an integrated second engine used exclusively for printing the second image for fast duplex speed in monochrome or spot colour. The input paper trays are located in the first engine and the DDP 184 operates as one functional engine.



## Connectivity

For very large data streams the DDP 184 boosts your production with on board spooling. Or it turbo charges your output with multiple original print (MOP) capability. And the DDP 184 is ready for action on the network with:

- Support for standard network printing protocols
- Access to all printer and finishing functions via the network
- Network management of the printer through a web browser interface
- Custom queues for easy-to-use printing profiles
- Increased throughput and responsiveness by intelligent printer sharing
- Job archiving that stores bitmaps for reprinting
- Forms management with e-forms downloaded to the DDP 184 RIP
- Personalised printing of text, image and graphics substitution in large documents
- Network printing from the Windows® and Macintosh operating systems

200 sheets

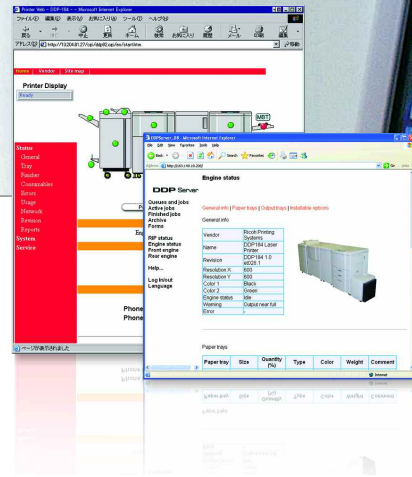
2,500 sheets





## Desktop and Web Controls

User software includes a printer driver, an installer, direct printing, DocXPLOER and a database print manager. The Adobe® PostScript® printer driver is available with plug-ins for Windows® and extensions for Macintosh which provide access to printer functionality. All printer functions are accessible via the printer driver and are also available through DocXPLOER and the Web Browser.



## Web Controls

The DDP print server contains a web server that offers monitoring and control functions via a web browser. The features include:

- Queue list, job list availability
- Archive, forms
- RIP details, queue details, job details
- Active jobs, finished jobs
- Accounting
- Router to make the web pages of the engine accessible
- RIPs, queues and jobs as lists or in detail
- DocXPLOER - allows monitoring and controlling of a cluster of RIPs
- Database print manager - merges a template document with records from a database to produce instance documents.

## Printer Driver Features

- Layout - imposition and finishing control
- Direct printing of PostScript®, PDF, TIFF, and ASCII files
- Page specific tray selection
- Forms/overlay management
- Colour separation
- Screening
- Installable options
- Printer installer
- Workflow controls that provide cluster printing features



## Add Value with Spot Colour

The DDP 184 supports red, blue and green toner and developer for spot colour applications. And the printer has customer changeable developer units so it is ready to switch colours when you are. Spot colour separation controls are provided when the printer engines have black and colour toner. Each element of the document (character, graphic shape, image pixel) is colour separated and mapped to either black or a colour.



## Specifications



### GENERAL

Print speed (black/black):	A4 (LEF):	92 ppm (92 ipm) <sup>1</sup>
	A4 (SEF):	92 ppm (184 ipm) <sup>2</sup>
Print speed (black/colour):	A4 (LEF):	50 ppm (50 ipm) <sup>1</sup>
	A4 (SEF):	50 ppm (100 ipm) <sup>2</sup>
Print speed (black/colour):	A4 (LEF):	92 ppm (92 ipm) <sup>1</sup>
	A4 (SEF):	46 ppm (92 ipm) <sup>2</sup>
Dimensions (W x D x H):	A4 (LEF):	50 ppm (50 ipm) <sup>1</sup>
	A4 (SEF):	25 ppm (50 ipm) <sup>2</sup>
Weight:	3,067 (4,451, high capacity feeder included) x 672 x 1,151 mm	
Power source:	500 kg (standard configuration)	
Power consumption:	Print engines:	200 - 240 V, 50/60 Hz (2 outlets required)
	DDP server:	200 - 240 V, 50/60 Hz
Duty cycle:	Maximum:	Print engine: 4.8 kW (at 220 V)
	DDP server:	70 W (at 100 V)
Duty cycle (peak):	Energy saver mode:	150 W (at 200 - 240 V)
	DDP server:	150 W (at 200 - 240 V)
Required maintenance area (W x D):	600,000 impressions per month	
Printer engine life:	Maximum:	1,600,000 impressions per month
	DDP server:	4,000 x 2,565 mm
Printer engine life:	Maximum:	Five years or 60,000,000 impressions (30,000,000 images/one print engine: paper size of A4/LEF, whichever comes first)
	DDP server:	Five years or 60,000,000 impressions (30,000,000 images/one print engine: paper size of A4/LEF, whichever comes first)

### CONTROLLER

Processor:	2 x 800 MHz PowerPC 750 processor with 256 MB RAM, 40 GB HDD
Resolution:	600 x 600 dpi
Embedded web server:	Real time device monitoring and configuration

### CONNECTIVITY

Network protocols:	NetBIOS, TCP/IP, EtherTalk, lpr, Port 9100 HTTP, SNMP, DHCP, IPP
Interface:	Ethernet 10 base-T/100 base-TX (autosensing)

### PAPER HANDLING

Paper input capacity:	Paper tray 1:	2,000 sheets
	Paper tray 2:	500 sheets
	Paper tray 3:	500 sheets
	Bypass tray:	150 sheets
	High capacity feeder (option):	3,000 sheets
Maximum:		6,150 sheets
	(tab dividers can be inserted from all 3 engine input trays)	
Paper output capacity:	Standard:	2,700 sheets
Paper size:	Paper tray 1:	B5 to 304.8 x 457.2 mm (A3+) (75 g/m <sup>2</sup> )
	Paper tray 2 - 3:	A5 to 304.8 x 457.2 mm (A3+) (75 g/m <sup>2</sup> )

Bypass tray:	A5 to 304.8 x 457.2 mm (A3+) (75 g/m <sup>2</sup> )	
High capacity feeder (option):	A4 (LEF) only (75 g/m <sup>2</sup> )	
Paper weight:	Input tray:	64 - 163 g/m <sup>2</sup>
	Bypass tray:	64 - 163 g/m <sup>2</sup>

### CONSUMABLES

Black toner:	36,000 prints/bottle
Colour toner (R, G, B):	80,000 prints/bottle
Black developer:	480,000 images (600,000 drum rotation time)
Colour developer (R, G, B):	480,000 images (600,000 drum rotation time)
Drum:	400,000 images (500,000 drum rotation time)

### DDP Print Server

Power:	200 - 240 V, 50/60 Hz
Weight:	7 kg, Micro-Tower PC
Dimensions (W x D x H):	180 x 430 x 360 mm, Micro-Tower PC
Processor:	Intel® Celeron 1.3 GHz processor with 128 MB RAM, 40 GB HDD
Page description languages:	PCL5c, PCL5e, Adobe® PostScript® 3™, PDF, TIFF, ASCII
Drivers:	Custom bi-directional drivers for Windows® 95/98/2000/NT4.0/XP/Server 2003 PPD for Apple Macintosh OS 8. x/9.x/10.x (Classic)

### OPTIONS

Standard Finisher:	Multi-position stapling, stacking, offset
	Face-up/face-down stacking
	Elevator tray: 2,500 sheets
Top tray:	200 sheets (non-stapled)
Container Stackers	Add up to two container stackers (4 containers) for production that requires offline finishing Holds A4 and A3 paper sizes up to 6,000 sheets (75 g/m <sup>2</sup> ) maximum

<sup>1</sup> Simplex.  
<sup>2</sup> Duplex.

For availability of models, optional apparatus and software, please consult your local Ricoh supplier.



ISO9001: 2000 certified  
ISO14001 certified

Ricoh believes in conserving the earth's precious natural resources. This brochure is printed on environmentally friendly paper: 50% recycled fibres, 50% chlorine free bleached pulp.

All brand and/or product names are trademarks of their respective owners.

Specifications and external appearance are subject to change without notice. The colour of the actual product may vary from the colour shown in the brochure.

Copyright © 2005 Ricoh Europe B.V. All rights reserved. This brochure, its contents and/or layout may not be modified and/or adapted, copied in part or in whole and/or incorporated into other works without the prior written permission of Ricoh Europe B.V.

# RICOH

For more information, please contact:

RICOH EUROPE B.V.  
P.O. Box 114, 1180 AC Amstelveen,  
The Netherlands.  
Phone: +31 (0)20 54 74 111  
Fax: +31 (0)20 64 18 601

[www.ricoh-europe.com](http://www.ricoh-europe.com)