

RICOH FW770/780

Wide-format copier



**Fast and Top-quality A0 Output
from a Compact Design**

A Step Ahead in Wide-format Copying

In your technical environment deadlines are tight and quality demands increasingly high. To make sure your business stays on the cutting edge of document handling, Ricoh introduces the new FW770 and FW780. These analogue wide-format copiers boast high speed, professional quality, compactness and ease of use. Designed to meet the specific copy needs of your workgroup, drawing office or copy shop, the FW770/780 produce high-quality yet cost-effective wide-format output in a very efficient way. With operation easy for everyone, a compact design and a number of time- and labour-saving functions such as Synchro Cut and Multi Copy, the FW770/780 are the ideal wide-format copiers for your office. And of course as you would expect of Ricoh systems, the FW770/780 reflect our company's awareness of environmental concerns in their design, usage as well as maintenance.



FW780: The All-round A0 Copy System

To meet your business's increasing A0 copying needs, Ricoh presents the new FW780.

As well as saving you time and costs, the FW780 offers flexible paper handling and a number of versatile functions. This new wide-format solution is set to greatly enhance your workgroup's efficiency and make your drawing office a smoother-running environment.

Optimal Original Handling

Copying old or less-than-perfect originals can sometimes cause difficulties. With the FW780 you can handle these delicate originals with care. As they can either be fed manually or automatically with the auto original feed switch, they suffer no wear and tear whatsoever. Thick or paste-up originals can be fed through the FW770/780's especially designed rear original feeder which keeps them from being damaged.

Variety of Paper Types

Technical drawings, architectural renderings, posters and maps are some of the documents you use and copy daily. Thanks to its two automatic roll feeders, the FW780 is suitably equipped to handle documents on different paper types and make sure you can effortlessly copy them.

Making Multiple Copies

When you require several copies of one document, you do not need to feed your original every time. You can now save time by making up to 10 copies of each original automatically with the FW780's Multi Copy function. This combines with the Copy Stacker to make multiple copy orders easy to handle. And with 100% tolerance adjustment copies are always exactly the same size as your original.

Cutting at your Convenience

You can depend on the FW780 for cutting your copies at the right length. Simply put in your original and it will be cut automatically with the Synchro Cut function. No more manual setting and cutting. Your copies are there waiting when you need them.



You can make up to 10 copies and deliver them to the front thanks to the FW780's Copy Tray.



Thick or paste-up originals are fed in a single pass through the FW780's rear feeder.



Combined A0 Strength

Optimal quality, productivity and flexibility are essential in view of an increased business workflow. With fast high-quality copying and a variety of flexible and easy-to-use functions, the new FW770/780 offer the ultimate in wide-format copying and meet all the professional needs of your drawing office or copy shop.

Best Output Results

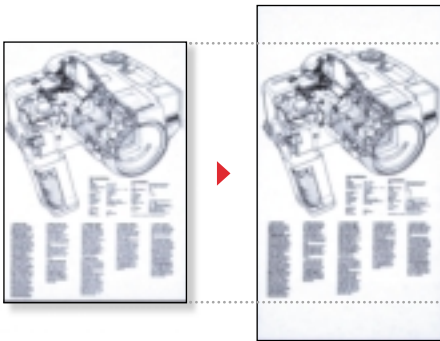
To meet all your copy quality demands, the FW770/780 offer a range of toner fusing settings. By selecting the right setting, the toner will firmly fuse with the copy media, whether you are copying on plain paper, tracing paper or polyester film.

Top Speed Performance

As the FW770/780 stand for fast and powerful copying they are ideal for your busy drawing room or copy shop. Thanks to their limited warm-up time and 3.6 metre/minute copy speed, the FW770/780 deliver your copies exactly when you need them.

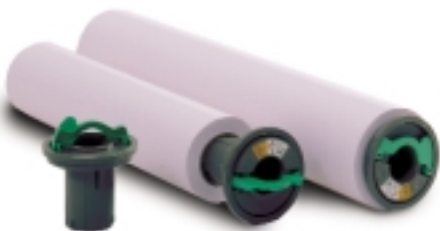
Exceptional Flexibility

To best match your copy requirements, the FW770/780 offer a range of enhanced versatile functions. To avoid copying a whole document when you only need part of it, you can use Partial Copy mode and save paper as well as time. And when you are in need of hole punching, you can easily adjust copy margins and make sure holes do not affect images or drawings with the FW770/780's Margin Adjustment function.



With Margin Adjustment you can create margins for easy storage of your drawings.

The unique roll holders make changing rolls of paper a piece of cake.



Straightforward and Simple

Designed to make copying a quick and convenient process, the FW770/780 offer full front operation and easy-to-use controls in a compact design. Additionally, paper setting is straightforward thanks to a new flange roll paper system and routine tasks such as toner replacement are simple and hassle-free.

With an Eye for the Environment

Reflecting Ricoh's awareness of environmental concerns, the FW770/780 offer various toner- and paper-saving functions as well as recycling possibilities. While both machines meet Energy Star® requirements, they also boast an organic drum, Energy Saving Mode and extremely low noise level. As such the FW770/780 are not only agreeable office partners, but also show Ricoh's commitment to its environment-conscious policy.



Anybody can make copies on the FW770/780 thanks to the straightforward operation panel.

FW770: Future-ready A0 Copying

With work pressure high and increased customer demands, your wide-format copier has to be reliable, compact, versatile and user-friendly. Combining all these basic strengths, the new FW770 is set to optimise your current office workflow. In addition, a number of options will make sure your business environment is ready to grow and in touch with tomorrow.

Reliable High-quality Copying

Customers demand consistently high quality. With the new FW770 Ricoh offers top quality in plain-paper wide-format copying. Halftones and fine lines are reproduced perfectly and even old and discoloured Diazo originals come out as new thanks to the FW770's 14 levels of image density.

Tight for Space

With space and money not readily available, you need a compact wide-format copier with cost-effective capabilities. As the smallest wide-format system on the market, the FW770 boasts a space-saving design which makes it ideal for walk-up-and-copy simplicity.

Flexible Cutting

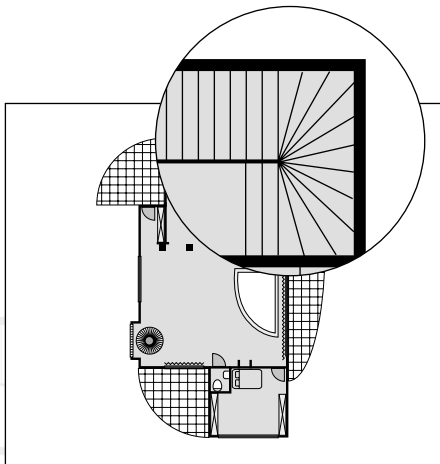
Making copies of originals you do not know the length of is no problem with the FW770. Simply feed the original and at the touch of a button you decide where the machine has to cut. Your copies will be cut at exactly the right length.

Optimal Feeding

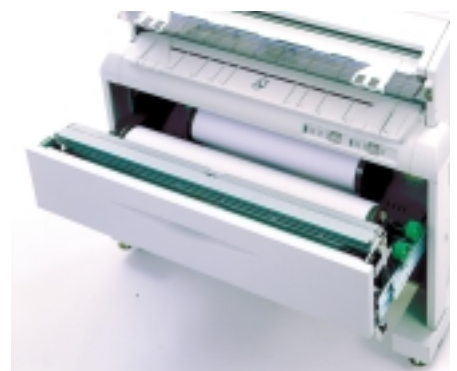
Handling and copying big drawings requires a document-friendly and easy-to-use wide-format copier. Designed to make large copies, the FW770 makes sure you need not spend extra time trying to feed your original. Thanks to its large original feeding table, making even the biggest copies is easy.

Ready for the Future

Providing excellent A0 plain-paper copying, the FW770 meets the basic needs of drawing offices of all kinds and has the capacity to grow with your business. The addition of optional extras such as the automatic roll feeder offers an on-line paper supply and increased productivity. At any time the FW770 is ready for the expanding demands of your office.



Both models offer the best quality money can buy.



With the FW770/780's optional 2 roll feeder, 2 types of paper are available at the touch of a button.

Specifications



FW770



FW780

General

Configuration: FW770: Desktop
FW780: Console
(with Roll Feeder unit)

Copying Process: Electrostatic transfer system

Original Size:

Maximum: 914 mm x 3,000 mm

Minimum: 210 mm x 297 mm

Thickness:

Front Feeder: 35 to 187 μ

Rear Feeder: FW770: 35 μ to 3 mm

FW780: 35 μ to 1 mm

Copy Size:

Maximum: 914 mm x 3,000 mm

Minimum: 210 mm x 297 mm

Multiple Copying:

FW780: Up to 10 (A0/E)

Warm-up Time: Less than 3 minutes

First Copy Speed:

FW770: Less than 21 seconds (A1)

FW780: Less than 25 seconds (A1)

Process Speed: 3.6 m/min.

Copying Speed: 2 cpm A0/E

4 cpm A1/D

Reproduction Ratio: 1:1 (\pm 0.5%)

Other Features:

Clear Mode

Auto Start

Auto Clear

Job Program

Margin Adjustment

Partial Copy

Emergency Stop

Fusing Temperature Adjustment

Cut Length Adjustment

Power Source: 220/230/240 V, 50/60 Hz, 7 A

Power Consumption:

FW770: Less than 1.4 kW

FW780: Less than 1.5 kW

Dimensions (W x D x H):

FW770: 1,080 x 670 x 1,310 mm

FW780: 1,200 x 803 x 1,140 mm

Weight:

FW770: 76 kg (copier only)

FW780: Less than 79 kg (copier only)

Options

- 2 Roll Feeder Units
- Table
- Roll Cutting Rail
- Side Guide Option



ISO9001 Certified
JMI-0125

Accredited by RvA



Printed with
Ecolith Ink
with respect for the environment



Ricoh has determined that this product meets the ENERGY STAR guidelines for energy efficiency.

Ricoh believes in conserving the earth's precious natural resources. This brochure is printed on environmentally friendly paper: 50% recycled fibres, 50% chlorine free bleached pulp.

All brand and product names are trademarks of their respective owners.

Specifications and external appearance are subject to change without notice.