

Print-Auditor



Print-Auditor from Print Control Solutions Ltd, is a suite of management information software tools which provide organisations with the ability to analyse printing costs, delivering accurate information on the true cost of printing, re-direct print jobs on to more cost-effective devices and charge for the use of the printers if desired. Print-Auditor not only ensures better management of an existing printing environment but also enables better planning of future printing strategy, helping organisations make more informed decisions: -

- How much does printing cost?
- What is the current utilisation of the printers?
- Would it be more cost effective to replace existing printers with new devices with a more appropriate specification?

Print-Auditor provides independent and unbiased analysis of exactly how much an existing printing strategy is costing. It allows analysis of all printing in a Microsoft Windows environment and among its many functions, Print-Auditor provides printer costing by user, department, and ultimately organisation.

For the first time IT managers have a software tool available that delivers complete and accurate information about activity across the whole of the printing environment without making any major changes to the network.

- Who is printing what and to where?
- Are the right printers being used for the right jobs?

With the rapid growth and sophistication of networking and the “connected office”, the use of low-end printers (up to 80% of units sold) has resulted in spiralling costs. Although printing utilities such as printer driver and administration have become more sophisticated, one area that has not been adequately addressed is that of printer cost management.

Most organisations realise that they need to implement a strategy, however, without adequate information on current activity and costs this is made more difficult.

Software Architecture

The Print-Auditor software solutions include the following: -

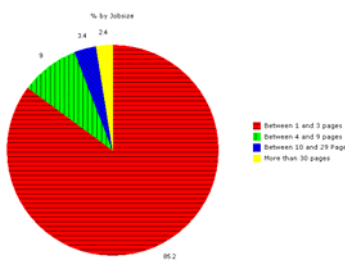
Data Collection Agents

There are two types of agent, client based TCA's and server based DCA's. The new and highly versatile TCA will record all printing activity on a Windows workstation including printing directly via the parallel port and Peer to Peer. A TCA can be loaded onto any Windows 95/98/2000/NT client using a simple automated install routine at time of User login. The TCA provides true Network operating system independence and will record print data from any Windows client PC regardless of the network O/S, including Novell v3/4/5 bindery, queue based and NDPS printing. The TCA requires NO reconfiguration of your network or client PC's and takes just a few minutes to install.

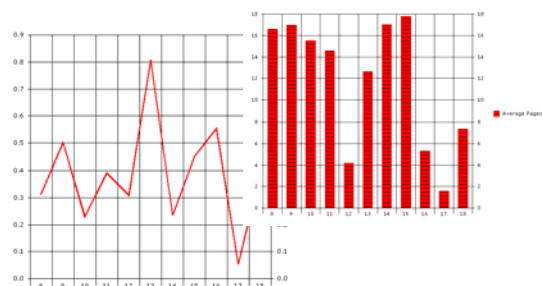
The server based DCA will automatically gather and store information on all print jobs passing through NT or Windows 2000 server print queues and is typically used to monitor those print jobs that are not initiated on a client PC.

Print-Auditor Site Survey

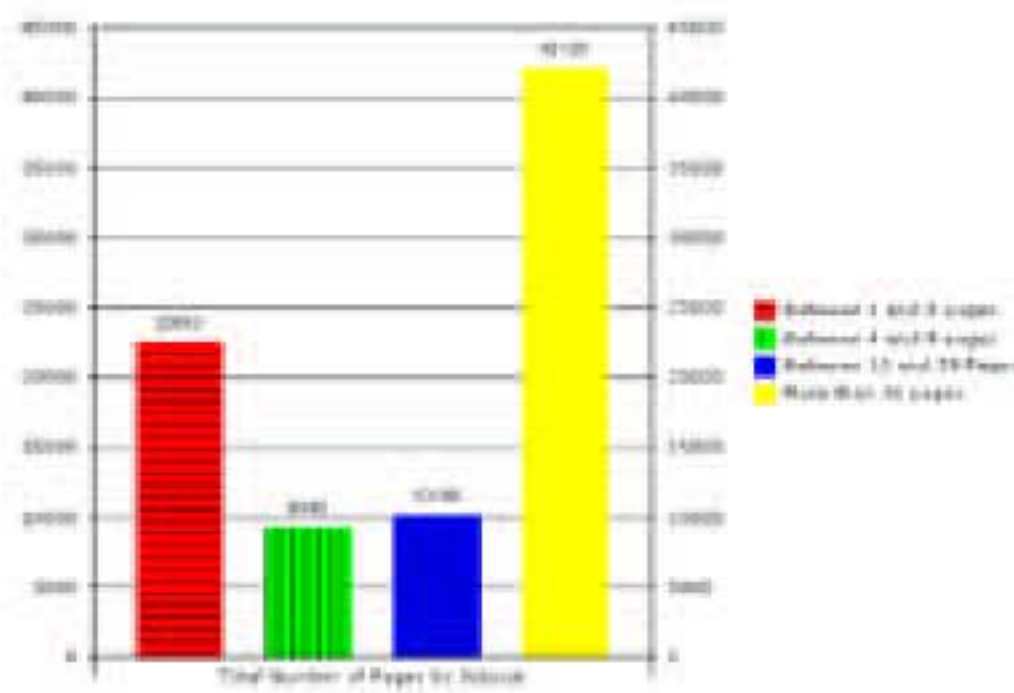
Site Survey is an investigative tool designed to produce a comprehensive, factual account regarding the printing activity collected.



Printers can be set up with cost profiles, either based on the standard database or preferably based on actual customer costs of ownership. Once printing activity has been analyzed, Print-Auditor enables a solution detailing the most cost effective printing solution for the customer, based on actual volumes and activity. Ongoing analysis using Print-Auditor enables customers to see delivery of the 'digital promise' for themselves.



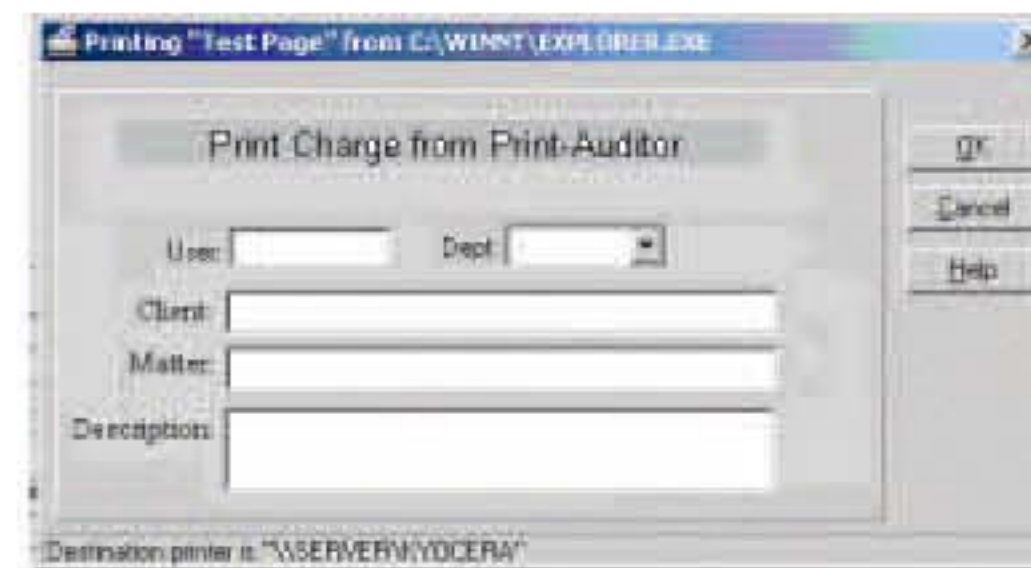
Print-Auditor PrintFlo



Print-Flo will save a company thousands of pounds a year by constantly monitoring network printing and ensuring print jobs are always sent to the most cost effective and efficient network printers. 100 page documents will no longer be printed on a 4 page a minute colour ink jet! The thresholds are easily configured giving an enormous potential for productivity gains and big savings on the cost of printing

Print-Auditor Print-Charge

Print-Charge is used for ongoing data analysis and to produce either client billing information or detailed billing information for internal Users, Groups, Departments and more. The data is held in the Print-Charge database but can easily be exported into an accounts software package for immediate invoicing if required.



Pricing and Upgrades

All modules of the Print-Auditor suite of software are charged by seat making pricing fair and simple. The cornerstone of the product is the Thin Client Agent. Once installed, upgrading is easy. All products use the same data collection method making upgrading from the exploratory Site Survey to ongoing analysis just a change of license code. Advancement to Print-Flo and Print-Charge is as simple as adding and configuring the database module.